

Configurator Software

Software for programming & diagnostics



Contact & Product

mo-Vis bvba



Biebuyckstraat 15 D

9850 Nevele - Belgium

Website: www.mo-vis.com

E-mail: contact@mo-vis.com

Telephone: +32 9 335 28 60

Configurator User & Installation manual

Produced and published by mo-Vis bvba, Belgium

Manual item: D-P009-50-70-02

Content

CONTACT & PRODUCT	2
<i>mo-Vis bvba</i>	2
<i>Configurator User & Installation manual</i>	2
CONTENT	3
IMPORTANT INFORMATION ABOUT THIS MANUAL	4
SAFETY PRECAUTIONS	6
DESIGN AND FUNCTION OF THE MO-VIS CONFIGURATOR	7
<i>How to start</i>	7
1. <i>Connecting</i>	7
2. <i>Open the mo-Vis Configurator Software</i>	8
3. <i>General settings in the menu bar</i>	8
4. <i>Make a connection with the device</i>	10
5. <i>Displaying the details and parameters of a device</i>	11
<i>How to program a device</i>	15
1. <i>Change parameters</i>	15
2. <i>Open a file</i>	17
3. <i>Store in a device</i>	19
4. <i>Import settings from a file into the device</i>	19
5. <i>Export settings from the device to a file</i>	23
6. <i>Connect / Disconnect</i>	23
7. <i>Load update mode</i>	24
8. <i>Save device's summary</i>	24
9. <i>Quit</i>	25
<i>mo-Vis bvba</i>	25

Important information about this Manual

Congratulations on choosing a mo-Vis product! If you would like to learn more about mo-Vis and its products, we invite you to visit our website: www.mo-vis.com.

Before you install or begin using this product, it is important that you read and understand the content of these installation and operating instructions, the safety instructions in particular.

The installation instructions will guide you as an installer through the options and possibilities with the mo-Vis Configurator software.

The operating instructions are primarily intended to acquaint you with the functions and characteristics of the mo-Vis Configurator software and how you can use it in the best manner possible. They also contain important safety information, as well as describing any problems that might arise during use.

Always keep the operating instructions handy when using the mo-Vis Configurator software, since the need for important information can arise concerning safety and its proper use.

All information, pictures, illustrations and specifications are based on the product information that was available at the time of printing. Pictures and illustrations shown in these instructions are representative examples and are not intended to be exact depictions of the various parts of the product.

We reserve the right to make changes to the product without prior notice.

Ordering documentation

You can download additional copies of this User & Installation manual on the mo-Vis website: www.mo-vis.com.



Important to know !

You can always find and download the latest version of all our manuals from our website at

<http://www.mo-vis.com/en/support/downloads>

Understanding usage

The health care professional (authorised installer) is responsible for understanding the intended use of the mo-Vis Configurator program, the specifications and its programming parameters.

mo-Vis cannot be held responsible for damage caused by incorrect installation or incorrect use of the product.

In case of problems, we advise you to contact your dealer.

If the dealer is not available, or unknown, please contact mo-Vis bvba by email support@mo-vis.com or by phone +32 9 335 28 60.

Safety precautions

General

Incorrect use of the mo-Vis Configurator software may lead to risk of injury to the user of a mo-Vis device.

In order to reduce these risks, you should carefully read this instruction manual, paying particular attention to the safety instructions and warning texts.

Any unauthorised use of the product may lead to increased risk of accident. Carefully follow the recommendations in this manual in order to prevent accidents from use.

In case of doubt about modifications and changes made with the mo-Vis Configurator, always contact a qualified service engineer.

Warning labels

This manual contains the following warning labels, which are intended to draw attention to situations that could lead to unwanted problems, e.g. personal injury or damage to the wheelchair.



CAUTION!

Please use caution where the symbol appears.



WARNING!

Please use extreme caution where the symbol appears. Failure to observe warnings can lead to personal injury or property damage.



CAUTION!

Limited liability

mo-Vis accepts no liability for personal injury or damage to property that may arise from the failure of the user or other persons to follow the recommendations, warnings and instructions in this manual.



CAUTION!

Testing

The mo-Vis device connected to a wheelchair must always be tested without any person sitting in the wheelchair after each parameter modification or programming of the device with the mo-Vis Configurator.

Design and function of the mo-Vis Configurator

Purpose

The Configurator Software is used for changing parameters of the mo-Vis products, as well as for technical diagnostic purposes. Depending on your user profile (User, Attendant, Dealer) you will be able to configure a number of parameters or analyze/evaluate certain errors or actions.

Software download

Download the Configurator Software from our website:

www.mo-vis.com/en/support/downloads

At our website you will always download the **latest** version.

A shortcut with the Configurator icon  is placed on the desktop at the same time. You can also find the Configurator Software in the Windows Start menu of your computer.

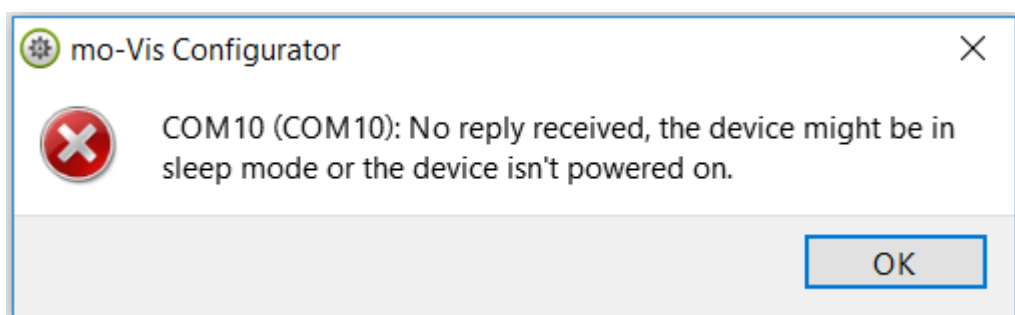
If an earlier version is already installed on your computer, downloading the Configurator software will automatically delete the old Configurator and install the new version.

How to start

1. Connecting

Double click on the 'Configurator' icon on your desktop to start the Configurator software. The 'Configurator' window opens.

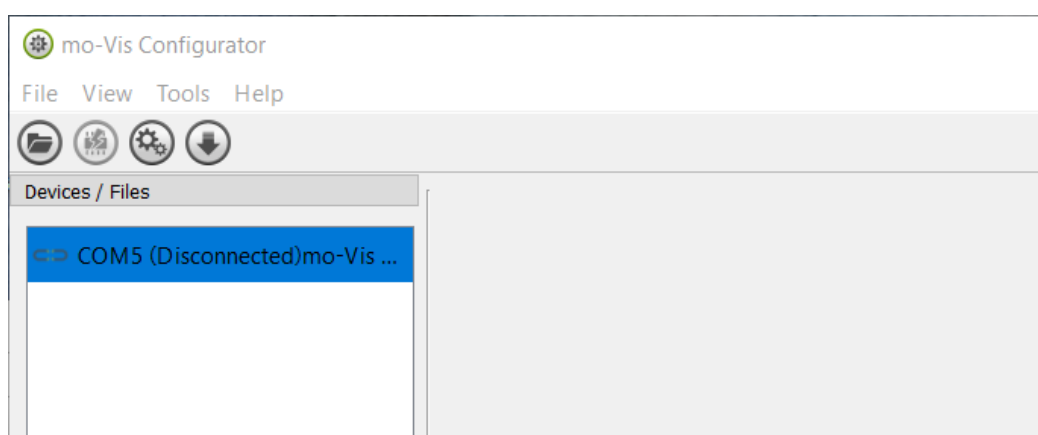
Connect the mo-Vis device to the PC using a mini-USB cable (or micro-USB cable in case of the Multi Switch), make sure the device gets power and is not in 'sleep mode'. When the device is in sleep mode or not powered on, you will get this message:



Please refer to the manual of the connected device when it is in sleep mode (for example, with the Multi Swing: to ensure the Multi Swing receives power, activate it by pressing the button to move the arm). Then try to connect again.

2. *Open the mo-Vis Configurator Software*

A COM port is created and is visible in the Configurator window but will still show the status “Disconnected”.



To make the connection with the device:

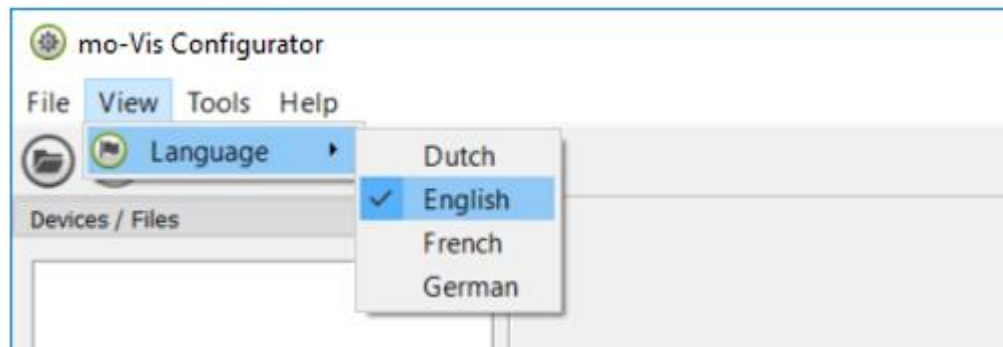
see 4. *Make a connection with the device.*

3. *General settings in the menu bar*

By selecting a tab in the menu bar, you can change some general settings, such as the language and access level.

3.1. *Language*

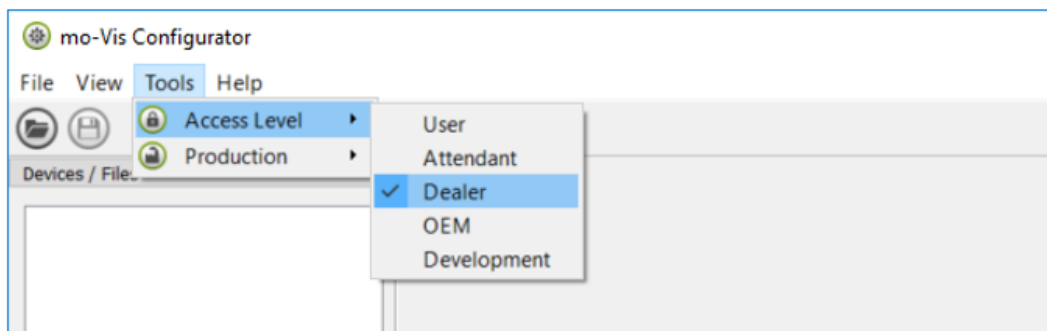
To change the language of the Configurator Software, click in the menu bar on File – View and select the new language you prefer. You can choose between 4 different languages: English, Dutch, French and German are available so far.



3.2. Access level

The software program always starts at the lowest Access Level. To be able to get more information, or see and change more parameters, you can upgrade your Access Level from User to Attendant or Dealer.

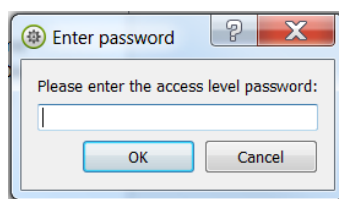
Click on the Tools tab in the menu bar and change the Access Level from User to Attendant or Dealer.



For the user profile, no password is required.

A password is required for all other profiles. Contact mo-Vis to obtain the dealer password.

You will be asked to enter your password: Type the correct password:



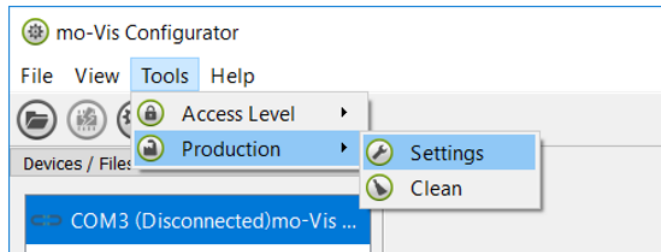
Attendant:	Contact your provider to obtain the password
Dealer:	Contact mo-Vis to obtain the password

Attention: these passwords are case sensitive!

OEM and Development are exclusively for internal use in mo-Vis.

3.3. Production settings

When you click on the “Tools Production” you will see the icon “Production Settings” and “Production Clean”.



you need special assistance from mo-Vis to use these action buttons in a safe and correct way!



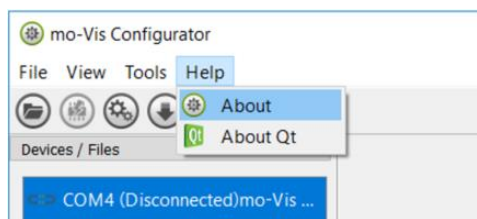
WARNING!

Assistance from mo-Vis is necessary and indispensable for this action.

Please contact mo-Vis if the configurator has problems in recognizing the mo-Vis devices. Sometimes it is necessary to clean the FTDI drivers. We will assist you to solve this problem.


3.4. Configurator version


Click on the “Help”+ About tab to see the version of the Configurator software in use.

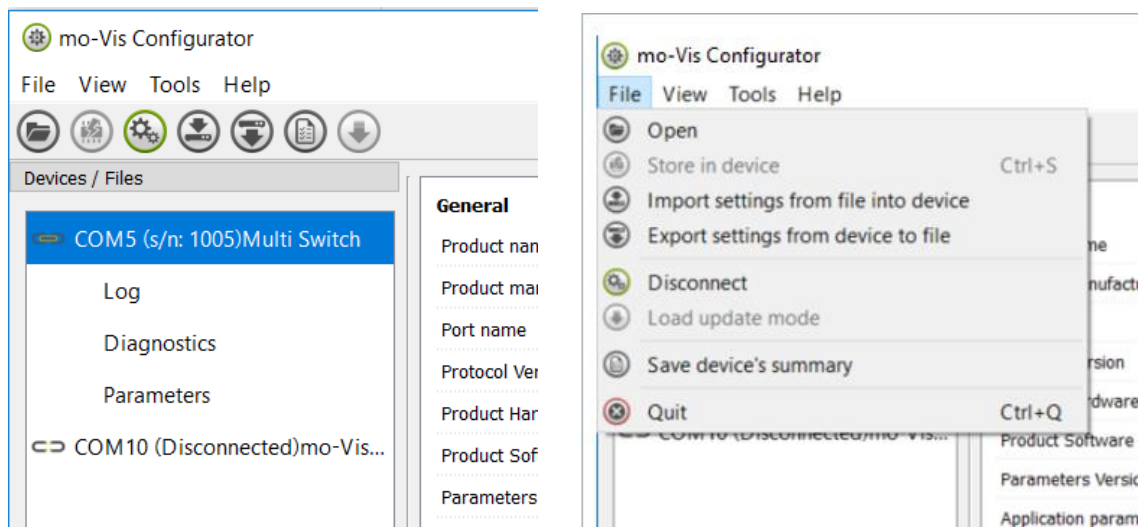


4. Make a connection with the device

There are 2 different ways to establish a connection: (Dis)Connect via the icon bar or (Dis)Connect via the menu bar.

Click on the connect icon  in the icon bar to make the connection between the Configurator Software and the mo-Vis device, or in the menu bar choose File – Connect.

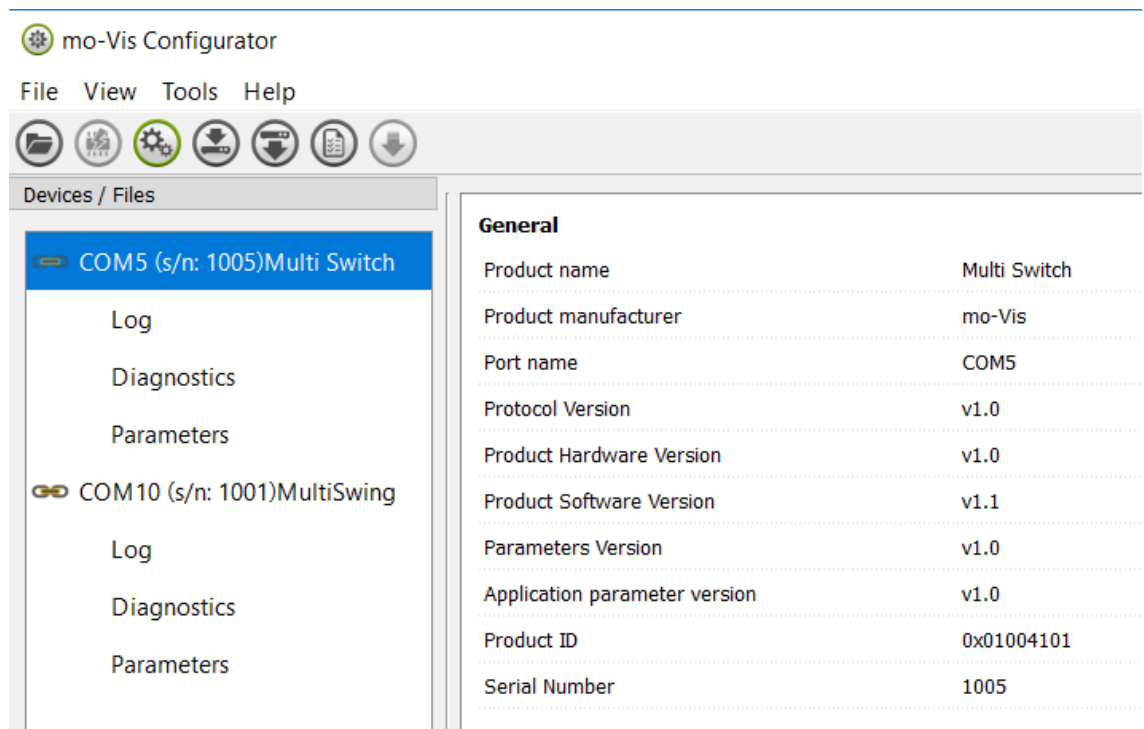
To disconnect the device, click on the same  icon in the icon bar or click on File and then click Disconnect.



5. *Displaying the details and parameters of a device.*

Once the connection is made, the software gets all the details and general information from the mo-Vis device and will display them on the right-hand side of the window

It is possible to connect multiple mo-Vis devices simultaneously and to view and compare their general information, details and parameter settings.



P.S.: depending on the number of parameters, it can take a while to get the information on the screen (max. 60 seconds).

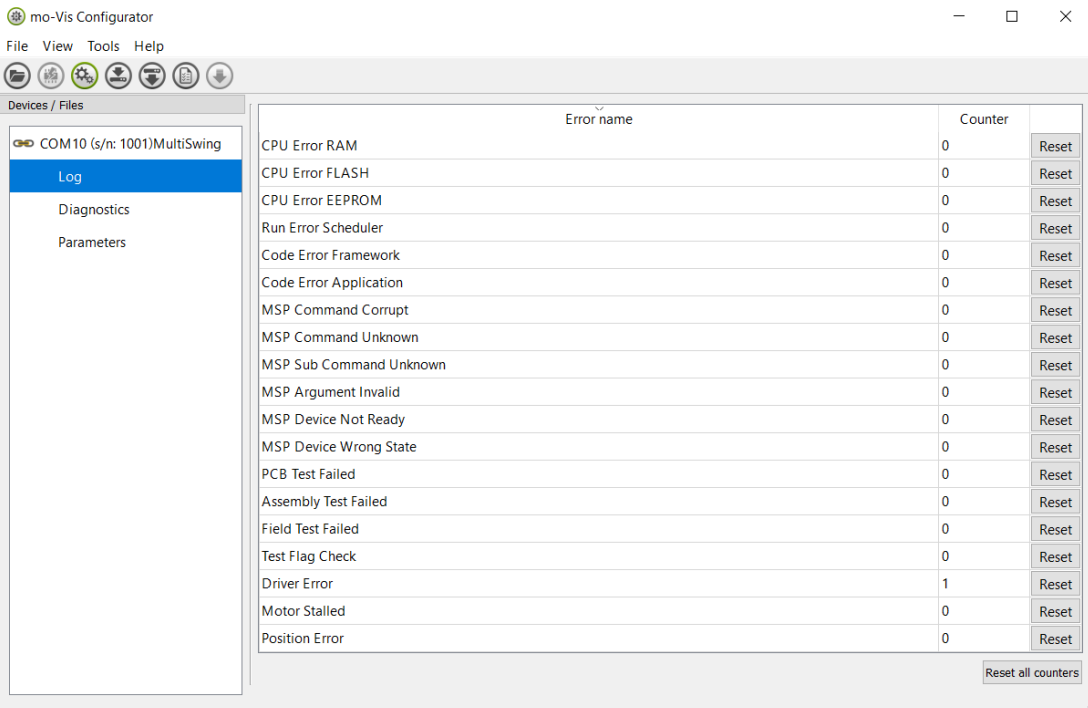
5.1. General information

Click on the tab that contains the COM port name, serial number and product name to view on the right-hand side of the window all the general information (serial number, product name, version, ...). See the image above

5.2. Error Log

Click on the “Log” tab in the device view and the view on the right side will display a Log overview of all occurred Errors and/or actions will be displayed with the number of times that they occurred. (dealer level only)

- Click on the “Reset” button to reset the counter to zero.
- Click on the “Reset all counters” button to reset all counters at once.
- It is not necessary to save the changes, these are saved automatically and immediately.



Error name	Counter	
CPU Error RAM	0	Reset
CPU Error FLASH	0	Reset
CPU Error EEPROM	0	Reset
Run Error Scheduler	0	Reset
Code Error Framework	0	Reset
Code Error Application	0	Reset
MSP Command Corrupt	0	Reset
MSP Command Unknown	0	Reset
MSP Sub Command Unknown	0	Reset
MSP Argument Invalid	0	Reset
MSP Device Not Ready	0	Reset
MSP Device Wrong State	0	Reset
PCB Test Failed	0	Reset
Assembly Test Failed	0	Reset
Field Test Failed	0	Reset
Test Flag Check	0	Reset
Driver Error	1	Reset
Motor Stalled	0	Reset
Position Error	0	Reset

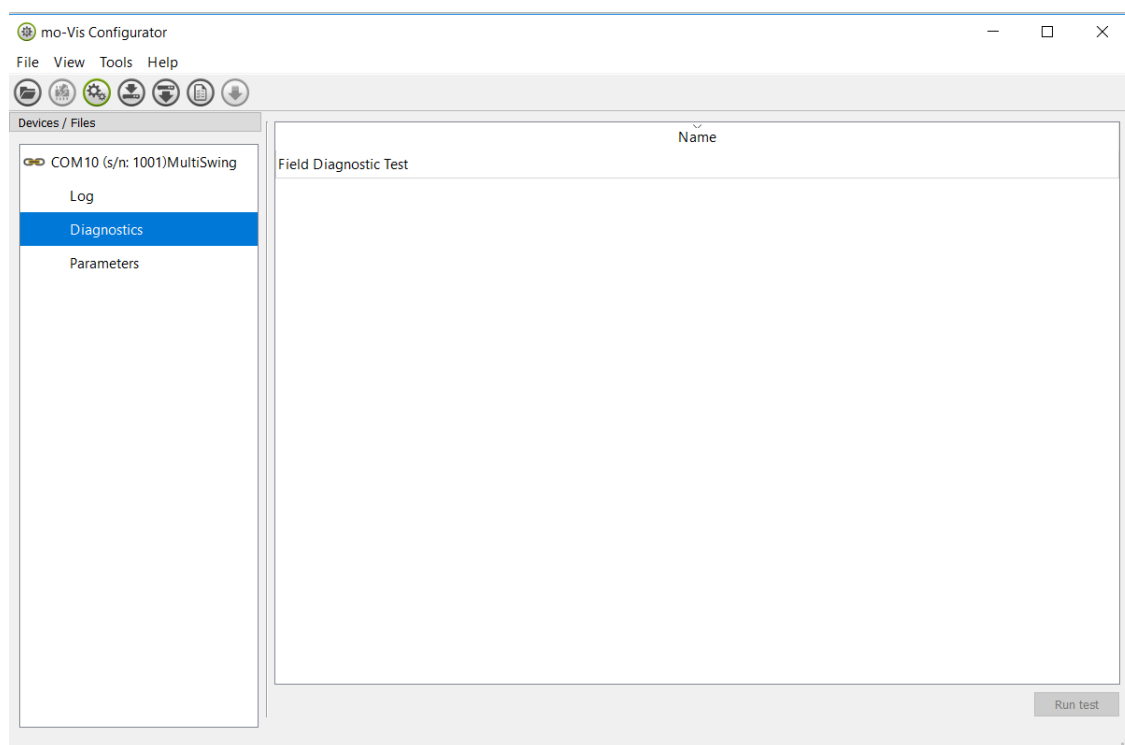
Reset all counters

5.3. Run test

Click on the “Diagnostics” tab to run a diagnostic test. (dealer level only)

When you click on ‘Diagnostics’ you will be able to run a Field Diagnostic Test. The information you get there can be important for service purposes. Click on ‘Field Diagnostic Test’ and then the button Run test to start the Field Test.

Please refer to the manual of the connected device before starting the field test (for example : when using a Multi Swing, you must remove the arm before running the test).



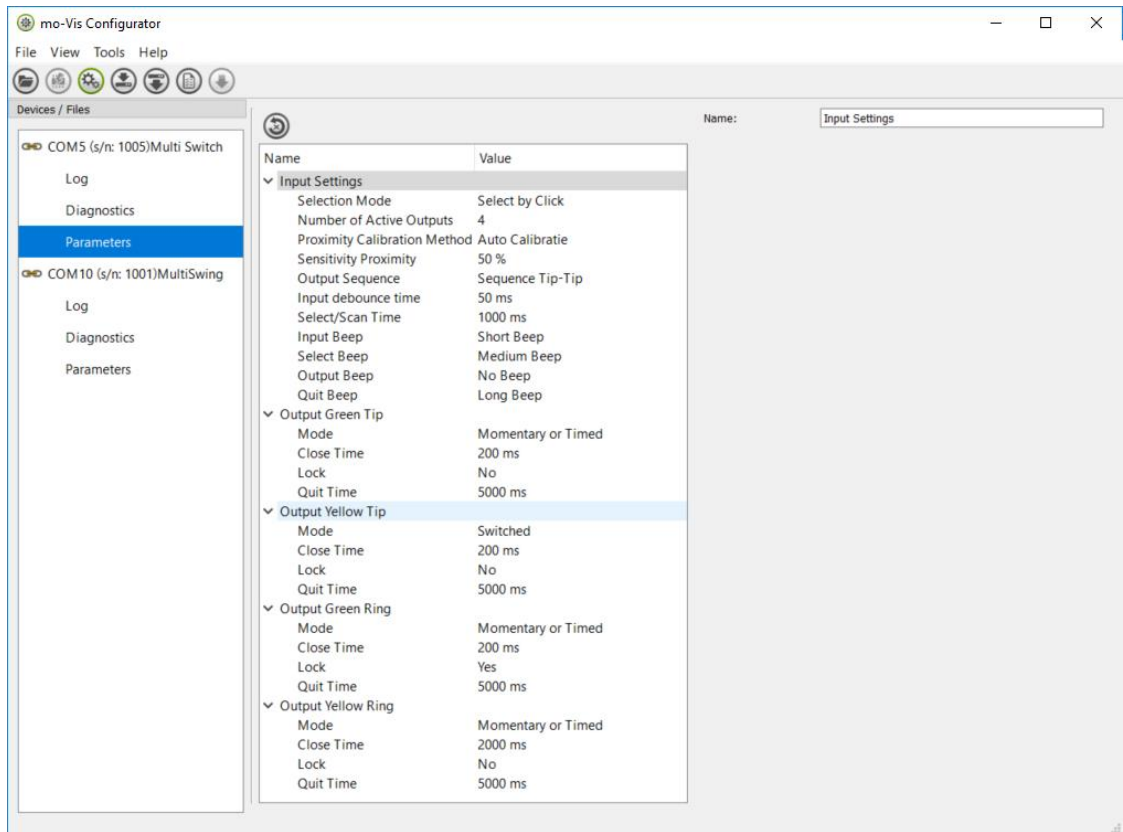
CAUTION!

Testing

The mo-Vis device connected to a wheelchair must always be tested without any person sitting in the wheelchair after each parameter modification or programming of the device with the mo-Vis Configurator.

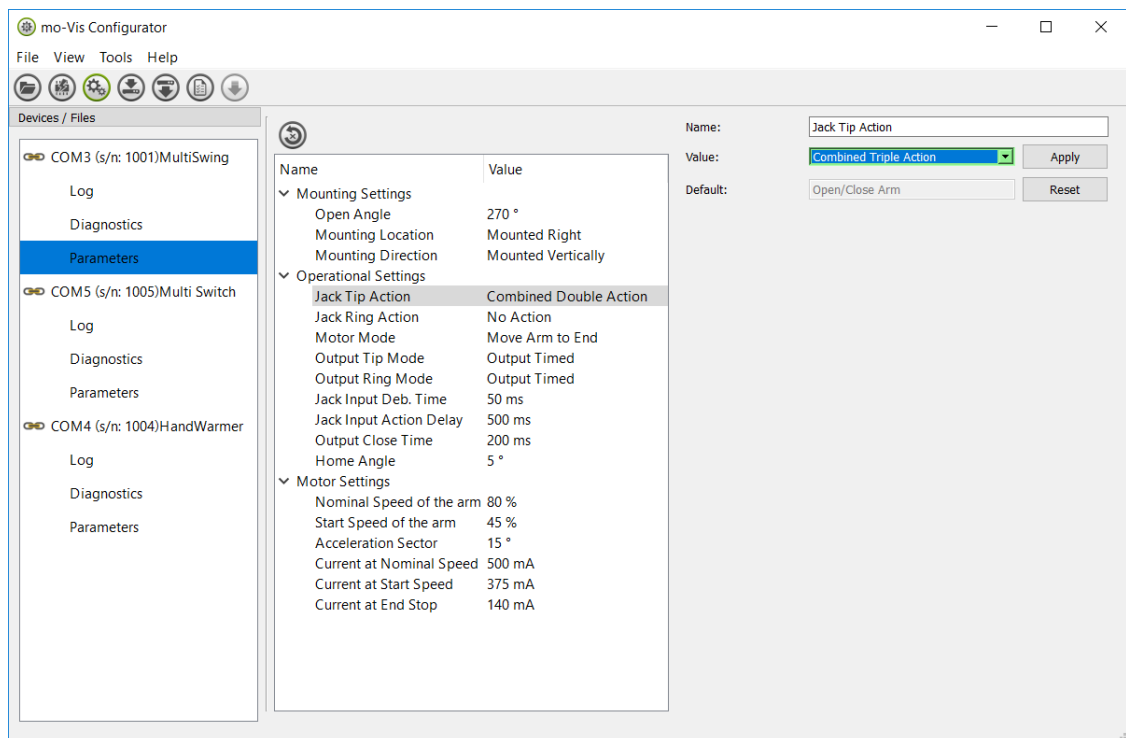
5.4. Parameter settings of the device.

When you select “Parameters” a list of parameters will be shown, depending on the device that is connected to the PC.




1. Change parameters

By selecting one specific parameter you wish to adjust, the view on the right will display the stored, default, min. and max. values of that specific parameter and the step. You can now change this parameter value by entering a new value in the textbox (or by clicking the arrows next to the text box) or by selecting a new value from the drop-down box. Values that are being changed, will be shown in green.

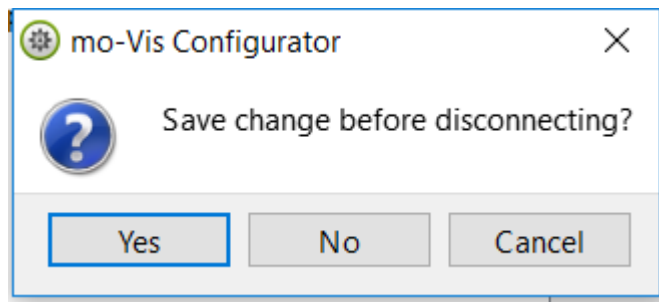


Click Apply to write the value temporarily to the device (you can immediately test it), but the new value is not stored in the device yet. So, if you lose connection (by losing the power), any changes you made will be lost. If you want to store the parameter values in the device, click on the

“Store in device” icon  or click in the menu bar on File – “Store in Device”.

From now on the new parameter values will be stored permanently in the device.


If you click on the disconnect button  without saving in advance (Store in device), a pop-up window will appear.

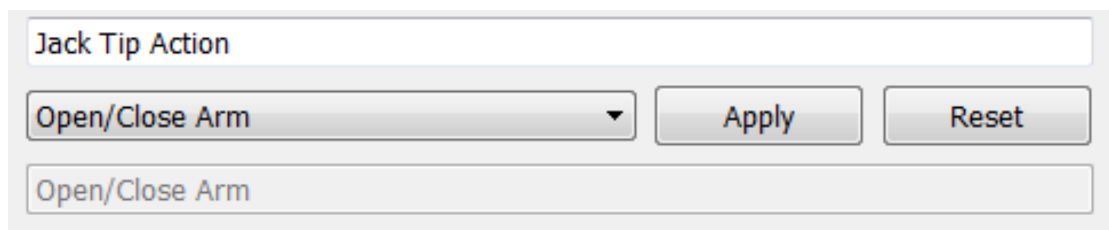



Click on the desired action button

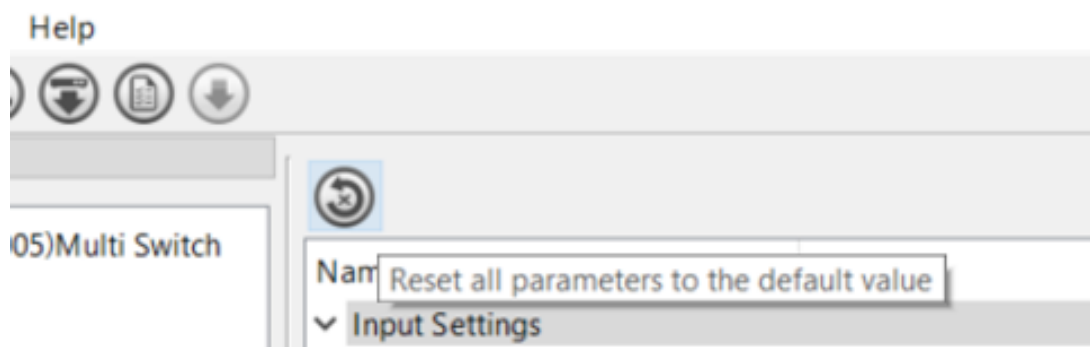
Attention: when you change a parameter without clicking the Apply button, the new values will not be activated. Once you click on any other parameter setting, the first parameter will go back to its previous settings.

Clicking on the Reset button will set the parameter value back to the default value, click Apply to store temporarily and the “Store in device”

 button to write the change to the device.



A new function and icon  is added at the top of the parameter view. From now on you can reset all parameters to the default value with one click.



An overview of all the parameters and their possible values/settings for a specific mo-Vis device can be found in the manual of the device itself (Multi Swing, Micro Joystick, MultiSwitch, HandWarmer, etc.).




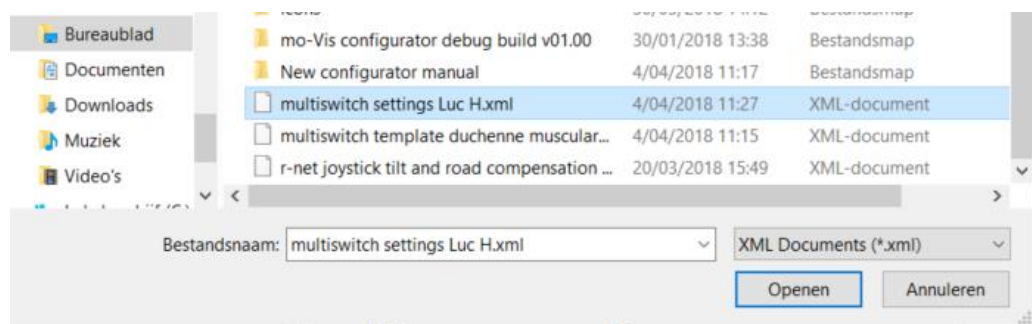
Important to know !

You can always find and download the latest version of all our manuals from our website at

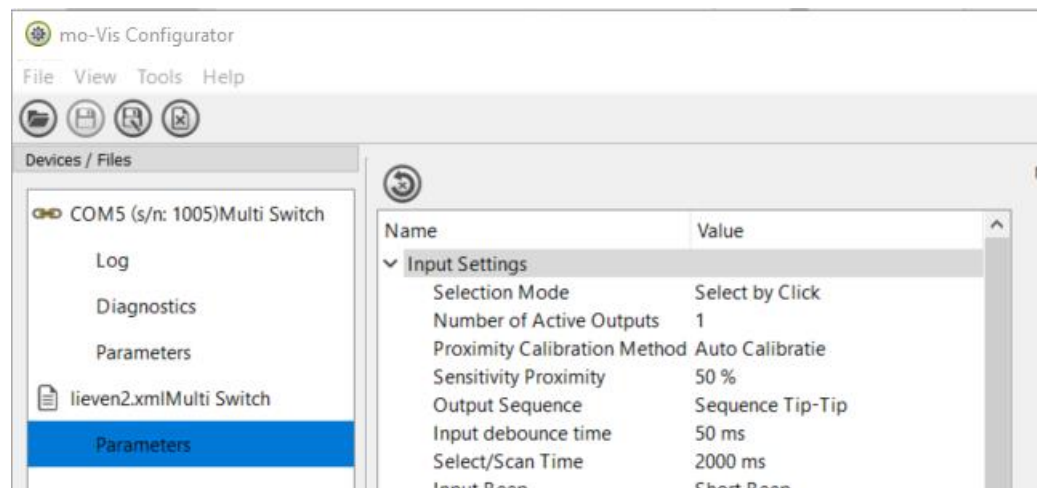
<http://www.mo-vis.com/en/support/downloads>

2. Open a file

When you click on the “Open a file” icon , a window opens where you can select a saved file of a mo-Vis device on your computer

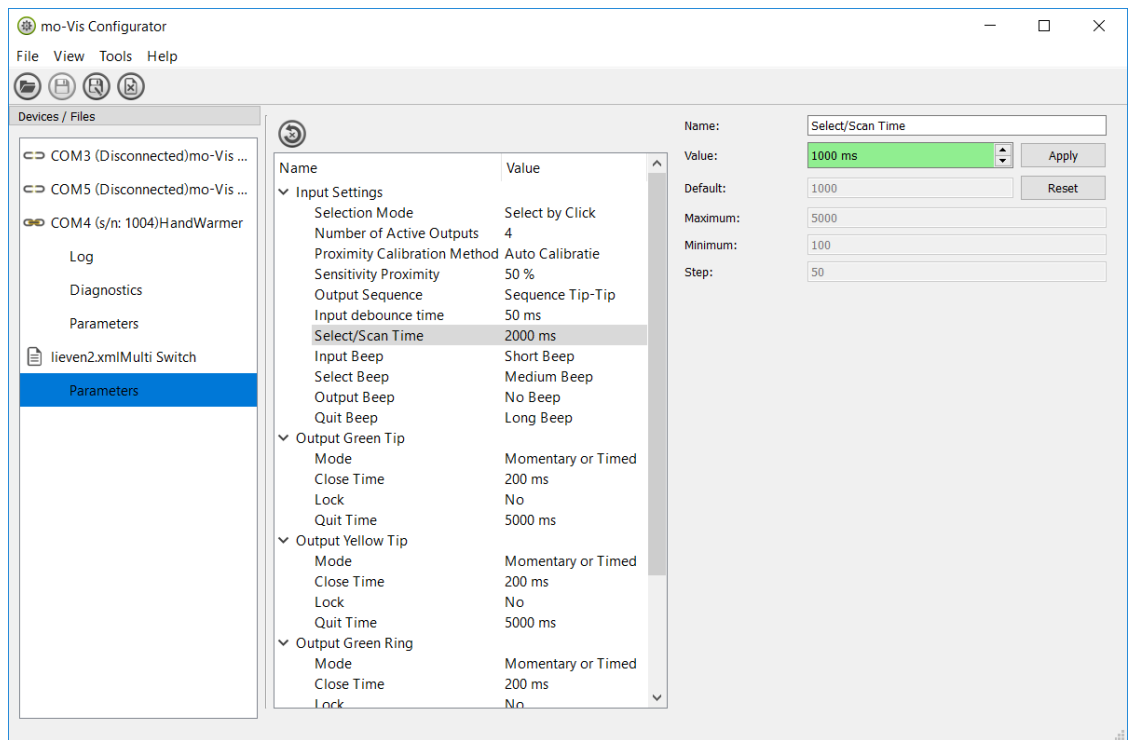


Click the “Open” button and the file will be displayed in the device window.



When you click on the Parameters of the uploaded file, you can modify the parameter settings in the file.

By changing a value in the uploaded file, you must confirm the new value or setting with a click on the “Apply” button.



If you click the Reset button the value will be reset to the default value. Again, you have to confirm with an “Apply” command.

There are two actions possible once the uploaded file has been modified:

1. Either you save the file again on your computer (for example: you can create a specific template for a disease)



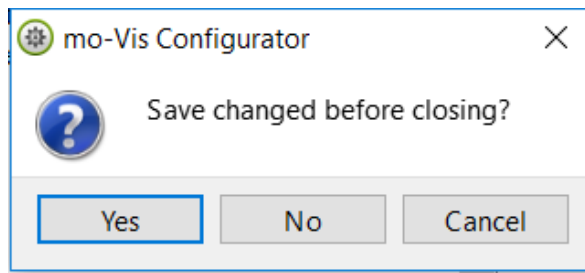
click the “Save” icon and the modified file will replace the existing file on your computer



click the “Save as” icon and the modified file will be saved as a new file with a new name




when you click the “Close file” icon, a window will appear with the message to save the changes



2. Or you save the file and import the file directly into the device.
Attention: the device must be of same type as that in the file.


see **4. Import settings from a file into the device**

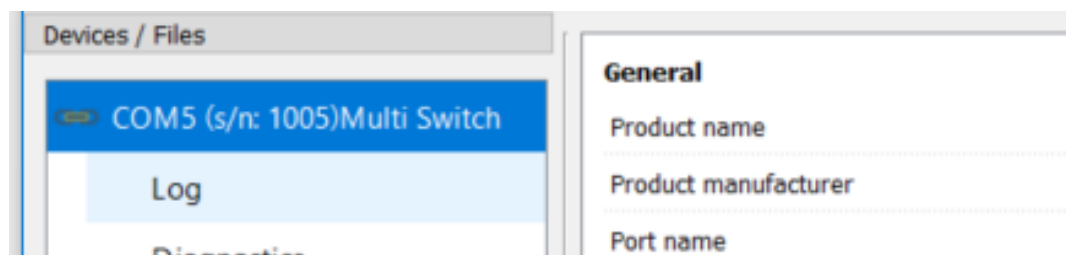
3. Store in a device

Click the  icon or tab to save the changes to the device.
As long as no changes are made to the parameters of the connected device, the “Store in device” function is not active. From the first change made, the icon in the icon bar or the corresponding tab in the File menu bar becomes active (lights up).

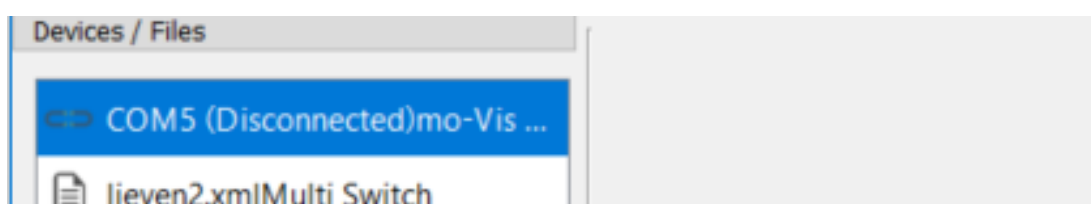
4. Import settings from a file into the device


Click on the connected device in the Configurator window.


Be aware that the device must be connected. 
Otherwise the function is not available.



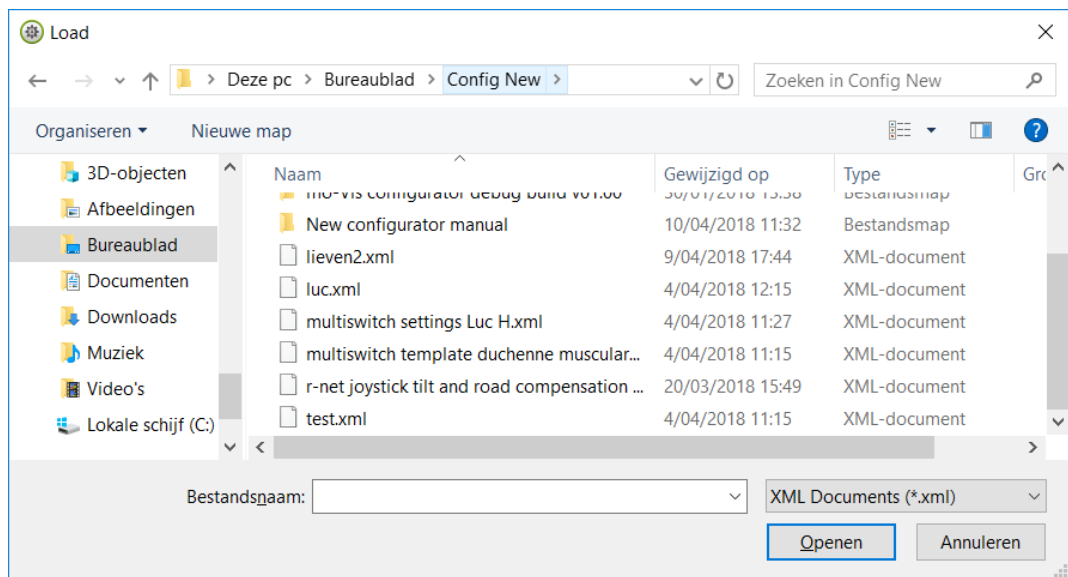
If disconnected ,




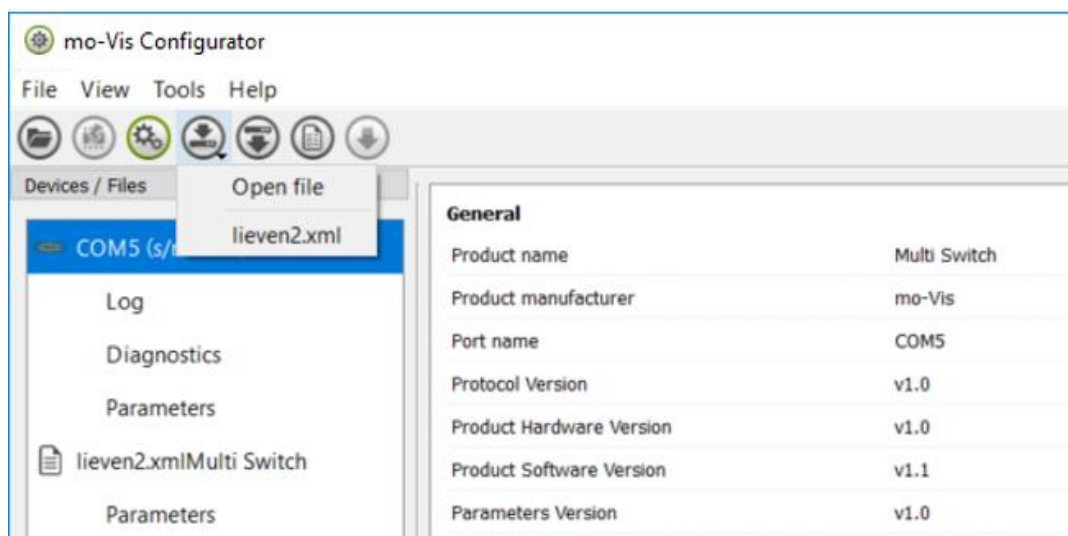
Click on the connect icon  in the icon bar to make the connection between the Configurator Software and the mo-Vis device or in the menu bar choose File – Connect.

Click on the “Import settings from a file into the device” icon  in the icon bar.

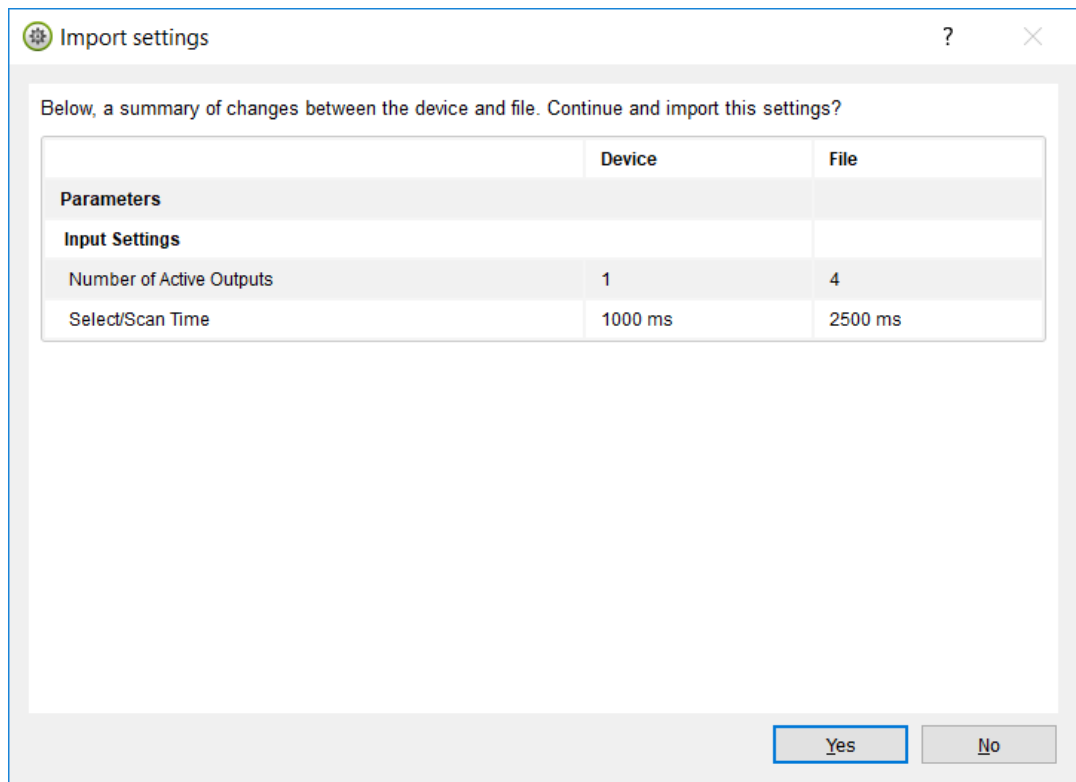
A new window opens in which you can search for a saved file.



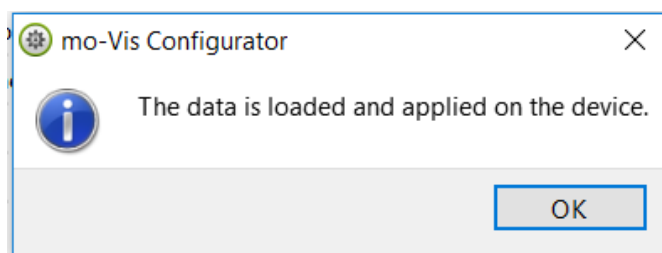
If you have already opened a file in the Configurator and click again on the “Import settings from a file into the device” icon , a small window will appear with the option to open an existing file or to select the opened file in the Configurator window.



Select the file you want to store in the device and a new window opens with an overview of the differences in settings between the file to be loaded and the current settings in the device

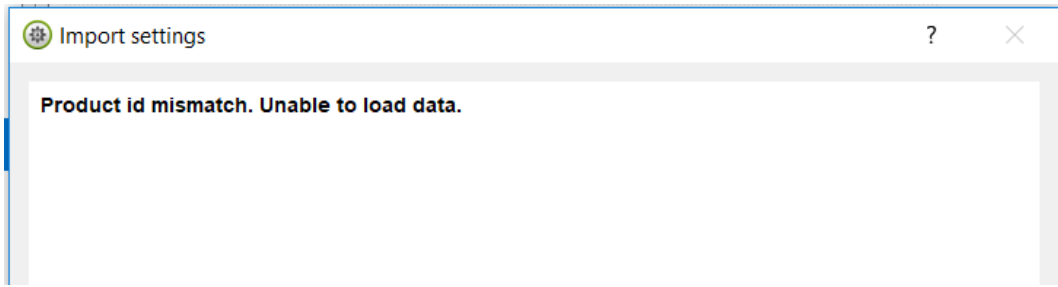


If you agree, click Yes and an information window appears with the message

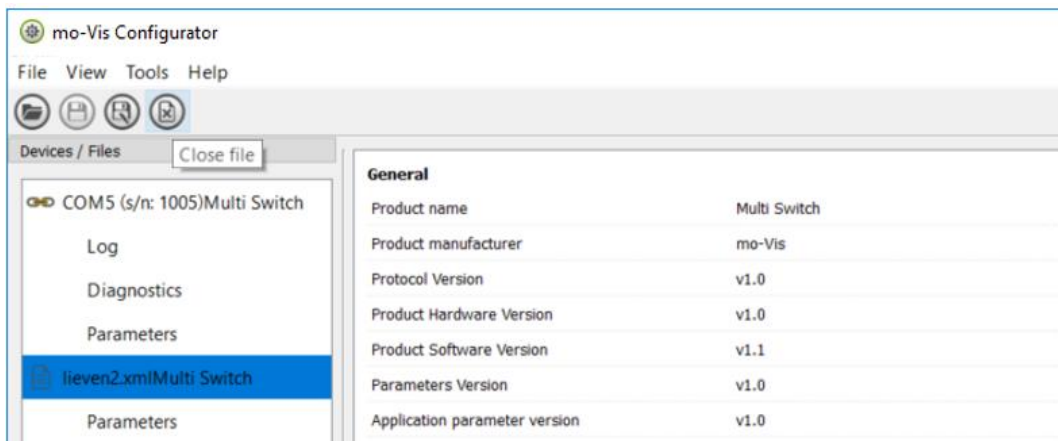



Click the "OK" button to accept.


When you try to load the data in a different type of device to that saved in the file, a pop-up window will appear with the message

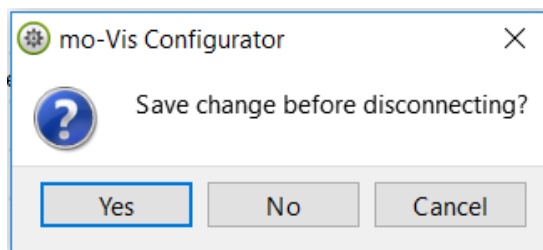


To close the file in the Configurator window, click on the “Close” icon in the icon bar or in the File menu bar.



To save the new settings in the device, click the “Store in a device”  icon.

When you click the “Disconnect” button  before saving the settings in the device, a pop-up window will appear with the following message

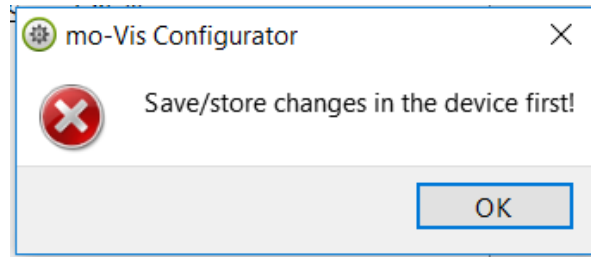


Click on the button with the desired action.

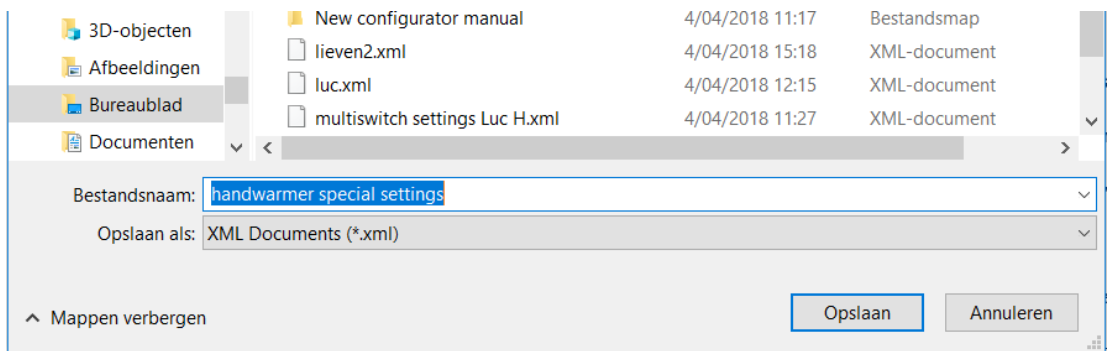
5. *Export settings from the device to a file*

When you configured a device according to the needs of a user, you can save these settings and store the file on a computer.


Before you can export the settings, you have to store the new configuration in the device. Click on the “Store in device” icon or tab. If you did not save the changes before clicking the export icon, you get the following message




Once the settings have been saved in the device, you can export the file to your computer and give it a name.



6. *Connect / Disconnect*

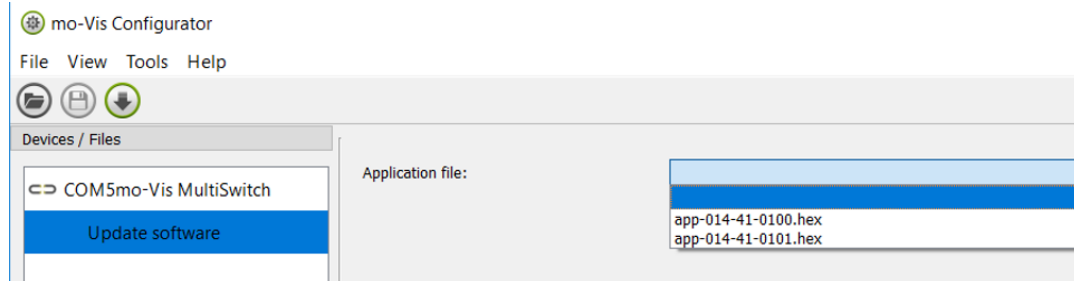
Click on the connect icon  in the icon bar to make the connection between the Configurator Software and the mo-Vis device or in the menu bar choose File – Connect.

To disconnect the device, click on the same  icon in the icon bar or click on File and then click Disconnect.

7. Load update mode

The software of a device can be updated.

This action requires support from mo-Vis to be completed in a correct and safe manner.



WARNING!

Assistance from mo-Vis is necessary and indispensable for this action.

Contact mo-Vis if this is the case. A special guide is required for this action. We will assist you to solve this problem.

8. Save device's summary





“Save the device Summary”

You can save all general product information and values of the different parameters into a file you can save in any folder of your computer. This can be important information to send to the support team.

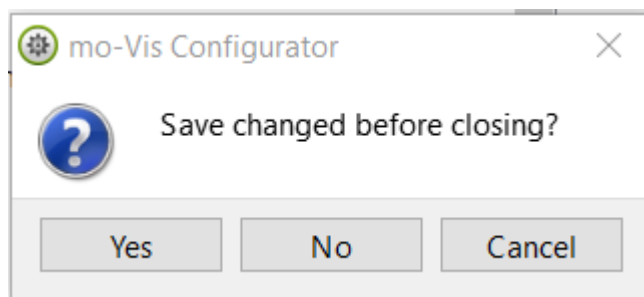
- Make sure the device is connected to the USB port of the PC
- If it is recognized it will appear in the ‘Device View’
- Select the correct device in the ‘Device View’
- Click in the menu bar on File- ‘Save device’s summary’ or click directly on the ‘Save device summary’ icon in the icon bar. Choose a location to save the file and give a name.

9. Quit

To close the Configurator Software, Choose File –  Quit (Ctrl + Q) in the menu bar or click on the X of the window 

Attention:

If you quit the Software by clicking the small cross X of the Window without first clicking on “Store in device”, the software will automatically ask you if you want to save your changes before closing.



Click on the appropriate button.

mo-Vis bvba



Biebuyckstraat 15 D

9850 Nevele - Belgium

Website: www.mo-vis.com

E-mail: contact@mo-vis.com

Telephone: +32 9 335 28 60