

Dwell Clicker 2



Dwell Clicker for Windows version 2.0

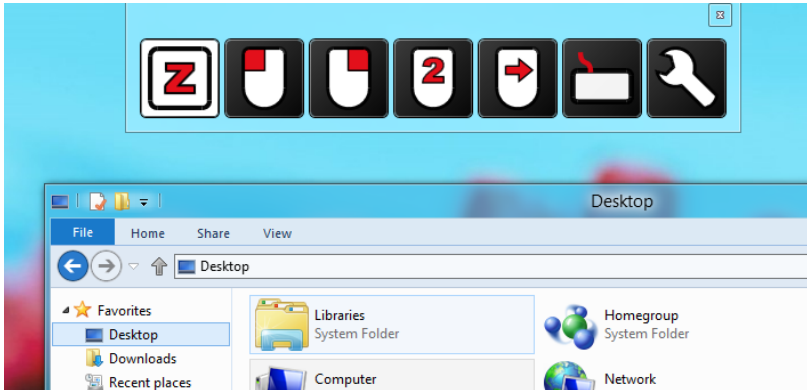
© Sensory Software International Ltd 2012

Contents

| | |
|----------------------------------------|----|
| About Dwell Clicker 2 | 3 |
| How to install Dwell Clicker 2 | 3 |
| Welcome to Dwell Clicker 2..... | 4 |
| Dwell Clicking..... | 5 |
| Visual dwell display..... | 6 |
| Target snapping | 7 |
| Right clicks and other tricks..... | 8 |
| Click lock | 9 |
| Buying Dwell Clicker 2 | 14 |
| Settings | 10 |
| Target Size | 11 |
| Dwell Time | 11 |
| Sound..... | 11 |
| Position..... | 12 |
| Start Dwell Clicker automatically..... | 12 |
| Licence | 13 |
| Exiting Dwell Clicker 2..... | 17 |

About Dwell Clicker 2

Dwell Clicker 2 is a Windows application that allows you to use a mouse or other pointing device without pressing buttons.



How to install Dwell Clicker 2

1. Download Dwell Clicker 2 from Sensory Software's website: <http://www.sensorysoftware.com/>
2. Install Dwell Clicker 2 by double-clicking on the downloaded installer file. Depending on your current system configuration, the installer may download and install additional software prerequisites.
3. Run Dwell Clicker 2 by double-clicking the shortcut on your desktop.

Dwell Clicker 2 requires:

- Windows XP with Service Pack 3
- Windows Vista with Service Pack 2
- Windows 7 or later

Some features require Windows Vista with Service Pack 2 or later.

Welcome to Dwell Clicker 2

When you start Dwell Clicker 2 for the first time, you will see the Dwell Clicker toolbar.



You will also be notified that your 30-day free trial has started. During this period, you will be able to use the full version of Dwell Clicker 2.

If your free trial expires and you do not purchase Dwell Clicker 2, you will still be able to use Dwell Clicker 2 but the following features will not be available:

- Target snapping
- Visual dwell display
- Click lock

Dwell Clicking

Dwell Clicker 2 allows you to use your mouse, or other pointing device, without clicking. You can dwell-click in the following way:

1. Move the pointer to the point where you want to click.
2. Leave the pointer in that position for a certain period of time. The length of time is configurable – see [Dwell Time](#).
3. After the dwell time has elapsed, Dwell Clicker 2 will perform a click.
4. You can make different types of click (left click, right click, etc.) by first dwell-clicking on one of the buttons in the Dwell Clicker toolbar – see [Right clicks and other tricks](#).

If you move the pointer away from the dwell area, the “dwell” will be cancelled. The size of the dwell area is configurable – see [Target Size](#).

Visual dwell display

Note: this feature is not available in the free version.

During a dwell, the dwell progress is displayed visually using a circular progress bar, which shows how much time is left before the click. It also indicates whether Dwell Clicker 2 has “snapped” to a target – see [Target snapping](#) for more details.

You can see when Dwell Clicker 2 is going to click:

1. When you rest the pointer, you see a transparent blue circle appear. If you move the pointer by a small amount, the circle will move with the pointer, so you can accurately control the position of the click. If you move the pointer by a larger amount, the click will be cancelled and the circle will disappear.



2. The circle turns solid blue to indicate that the click position is locked. If you move the pointer by a small amount, the circle will not move because the click position is now fixed. As before, if you move the pointer by a larger amount, the click will be cancelled and the circle will disappear.



3. When the circle is complete, Dwell Clicker will click in the centre of the circle.

Target snapping

Note: this feature is not available in the free version.

Target snapping is a feature that makes it easier to click on buttons, menu items, links and other items on the screen.

Dwell Clicker automatically detects items on the screen that can be clicked on, and will “snap” to the item nearest to the cursor.

Right clicks and other tricks

You can change which type of click Dwell Clicker will make by selecting buttons in the Dwell Clicker toolbar.



Rest – Dwell Clicker will not click when you stop moving the pointer. Select another click type to stop resting.



Left click – Dwell Clicker will click the left button.



Right click – Dwell Clicker will click the right button.



Double click – Dwell Clicker will double-click the left button.



Drag – Dwell Clicker will hold down the left button. The first dwell will start the drag and the second dwell will release the drag.



On-screen keyboard – Display the Windows on-screen keyboard.



Settings – Display the Dwell Clicker settings.

Click lock

Note: this feature is not available in the free version.

After a right click, double click, or drag, the click type will revert to left click for the next click.

If you want to do the same click type repeatedly – for example, you might want to drag cards in Solitaire - you can “lock” the click type.

To lock the click type, select it twice.



Not selected – this click type is not selected.



Selected – Dwell Clicker will right click once, then change back to left click.



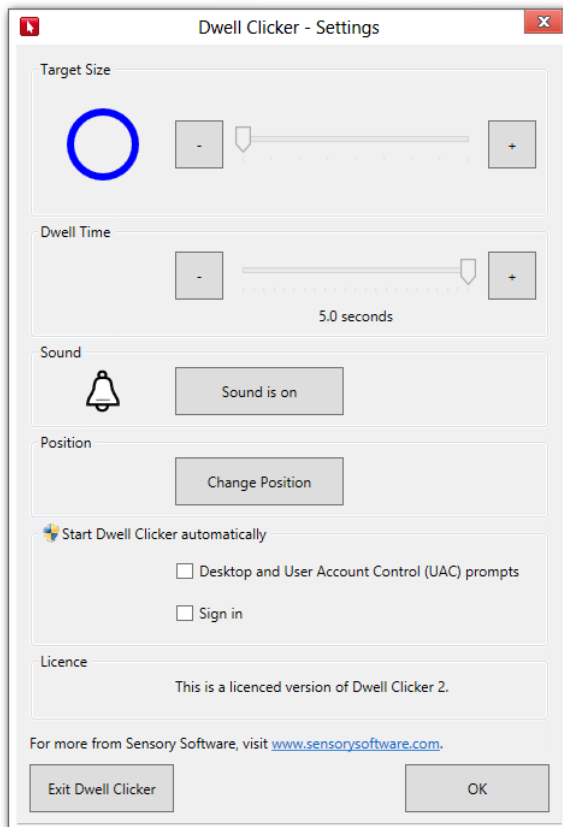
Locked – Dwell Clicker will right click every time until you select a different click type.

Settings

You can access Dwell Clicker 2 settings by clicking on the Settings button:

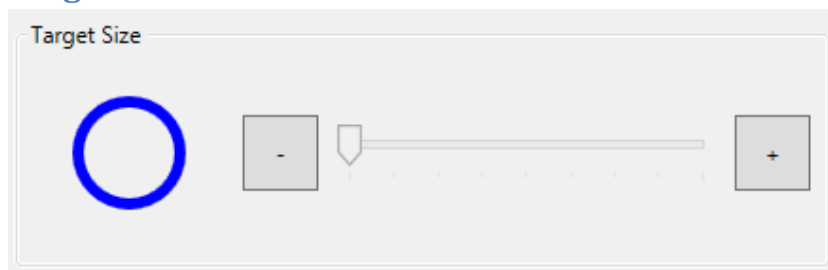


This will open the Settings window:



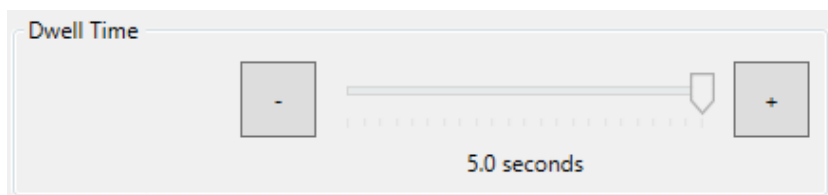
The following sections describe the settings in more detail.

Target Size



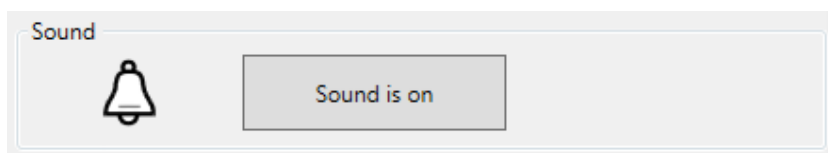
The target size controls how far you can move the pointer without interrupting the current dwell. The target size can be adjusted by either clicking the “-” and “+” buttons, or dragging the slider.

Dwell Time



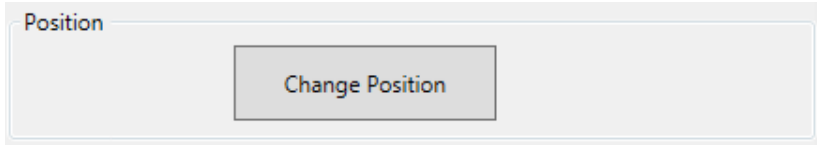
Adjust this to control how long the pointer needs to be left in the same place before a click occurs.

Sound



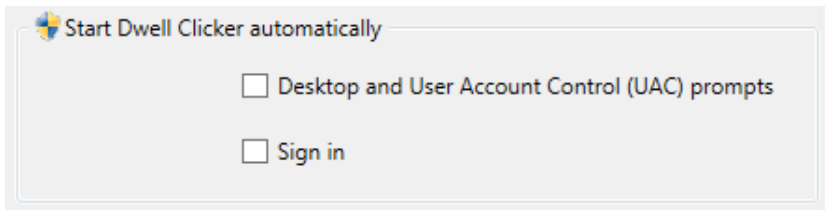
This setting toggles on / off the sound that accompanies a dwell click.

Position



Clicking the “Change Position” button lets you select the Dwell Clicker 2 toolbar position.

Start Dwell Clicker automatically



The two checkboxes in this section control Dwell Clicker 2’s integration with your Windows environment:

- **Desktop and User Account Control (UAC) prompts.** Check this box if you want to run Dwell Clicker 2 every time Windows starts. If you are on Windows Vista or later and check this box, you will also be able to use Dwell Clicker 2 to click buttons on UAC prompts.
- **Sign in.** Check this box if you want to run Dwell Clicker 2 at the sign in screen. Note that this option is only available on Windows Vista or later.

Changes in this section will take effect the next time you start your computer.

Note: On Windows XP, Dwell Clicker cannot be started at UAC prompts or at sign in.

On Windows Vista or later, depending on your system configuration, clicking either of these checkboxes may result in a UAC prompt being

displayed. Unless the “Desktop” box is already checked, you will not be able to use Dwell Clicker 2 to click on this UAC prompt.

Licence

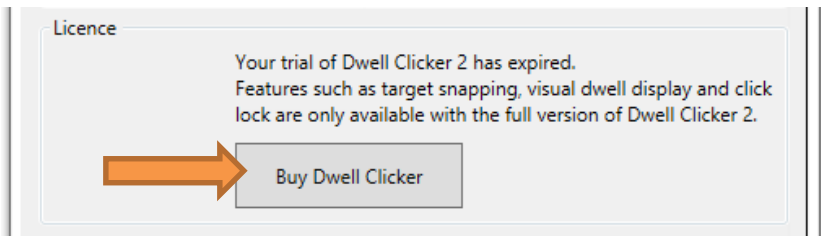
The Licence section shows the current licence status. If you have not yet purchased Dwell Clicker 2, you can click Buy Dwell Clicker to start the checkout process.

Buying Dwell Clicker 2

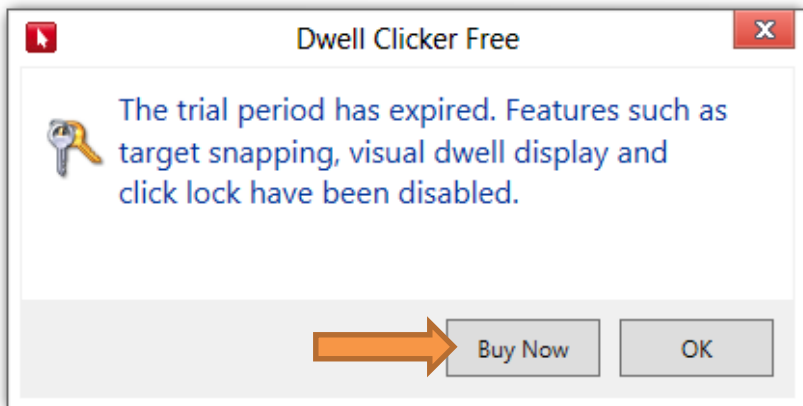
You can buy Dwell Clicker 2 at any time – both during the free trial and after it has expired. First, select the Settings button:



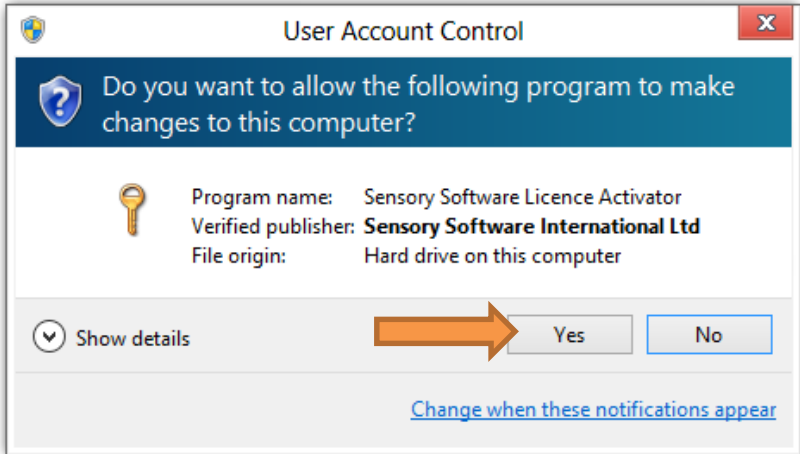
Then, in the Settings dialog, click the “Buy Dwell Clicker” button:



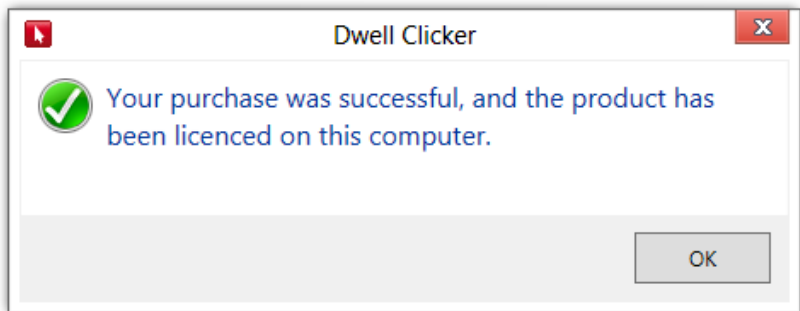
Then click “Buy Now”:



Your web browser will open. You will be asked to enter your name, email address, and country. On the next page, you will be asked to enter your credit card details. Once you have completed these forms, Dwell Clicker 2 will automatically activate your new licence. Depending on your system configuration, you may need to click “Yes” at the following prompt:



Once the licence has been activated, you will see the following confirmation:



Congratulations – you now have access to all Dwell Clicker 2 features. You will also receive an email containing your licence code. You

should keep your licence code in a safe place, because you may need it to re-activate Dwell Clicker 2 in the future.

Exiting Dwell Clicker 2

There are two ways to exit Dwell Clicker 2:

1. Click the “x” at the top-right of the Dwell Clicker 2 window:



2. Click the Settings button, and then click “Exit Dwell Clicker”.

